

SEP 29 1962

Social Science Structure Handles 2,600 Students

New Building Fits Into Campus Scene Neatly

How, the University of Wisconsin economics professor asked, "did we get along without it last year?"

What, the anthropology instructor queried, "would we do if we didn't have it this year?"

Where, the sociology professor wondered, "did all those students come from?"

Handles 2,600

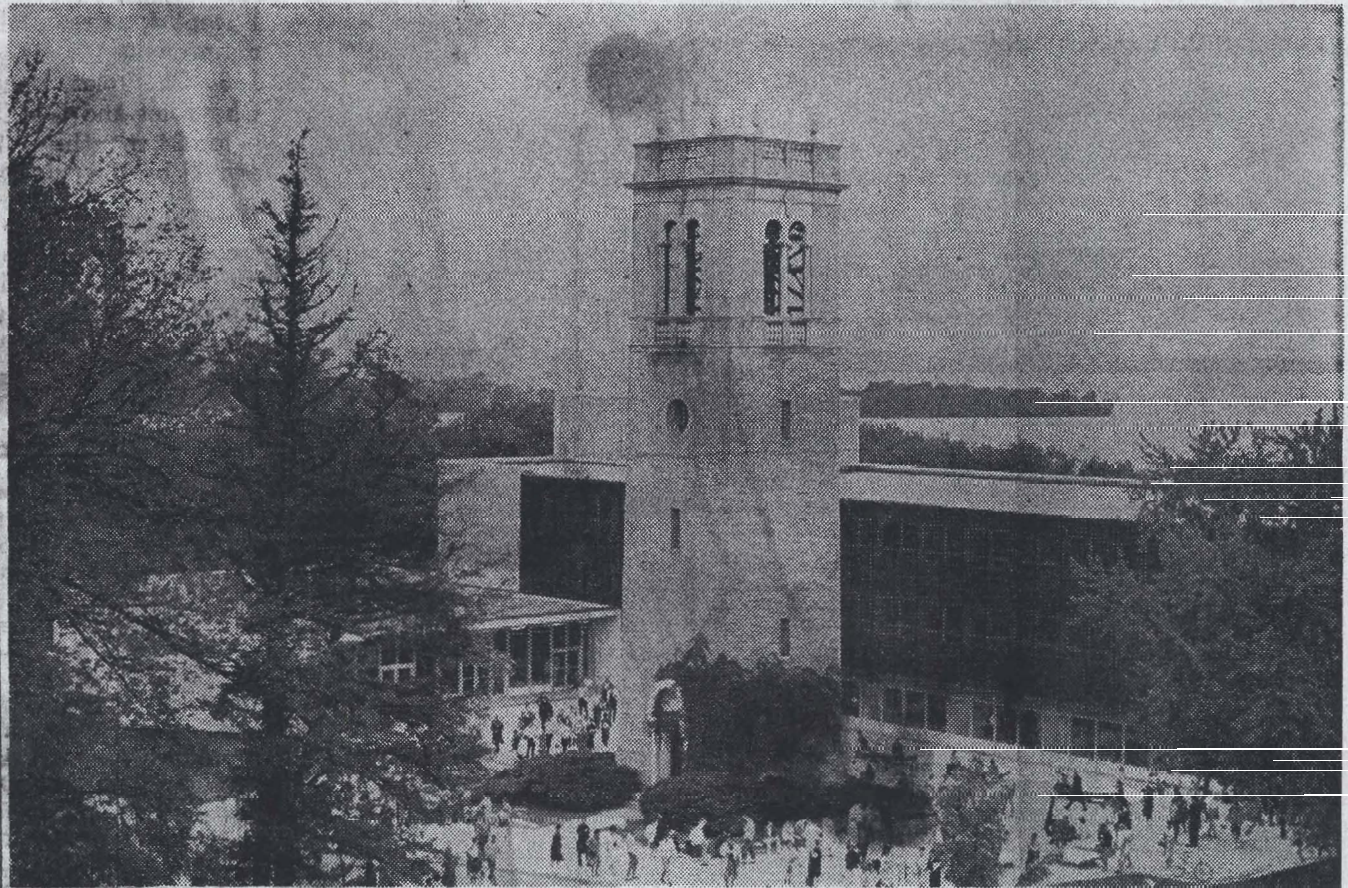
The teachers referred to a new campus beauty — the Social Science building, which opened this fall. This seven-level contemporary structure provides 28 class and lecture rooms, and can handle close to 2,600 students at one time. This is approximately 11 per cent of the total registration on the Madison campus.

Constructed at a cost of \$2.6 million, the building is located on Observatory dr., adjacent to the Carillon tower, and across the drive from the Commerce building. It houses three university departments — anthropology, economics, and sociology. There are 85 faculty offices and three auditoria, one seating 500 and two others seating 250 each.

The building is second only to Bascom hall in number of classrooms, and does much to ease what was described as a most critical shortage, worsening each semester as the student population continues to mount.

Screen 'Changes'

Visitors seeing the Social Science building for the first time see a wide screen on the front (south) side. This appears to change colors at different hours.



An Open House at the University of Wisconsin's New Social Sciences Building, On Observatory Dr., Near the Famed Carillon Tower, Will Be Held on Oct. 20.

—Gary Schulz Photo

Made of anodized aluminum, the screen serves as a shield against the glaring sun and as an attractive backdrop for the Carillon tower.

Between the screen and the tower is a terrace-plaza, consisting of six-inch quarry tiles set in concrete squares. Seats and benches in this area are granite, and decorative toadstools mosaic.

Lights are placed to highlight the Carillon tower from its base. Adding to the beauty of the landscaping are planting beds, adjacent to the mall, made of chipped marble.

Interior features include a large library, air-conditioning, new-type chairs and tables, ample display cases, and soundproof listening rooms utilized by language stu-

dents.

In another month or so, a large mosaic decoration, created by Prof. James Watrous of the art history department, will be placed in the main lobby.

When regents voted in February, 1959, to construct the building, they also asked that the nearby wooded area between the tower and Muir knoll, a hundred yards

to the east, be designated as John Muir park "to serve as a laboratory for studying the plants and animals of the region and as an outstanding example of the landscape of Wisconsin."

Law, Law, Potter and Nystrom, Madison, were the architects for the Social Science building, and Orville Madsen Inc., Minneapolis, the general contractor.