

UNIVERSITY OF WISCONSIN-MADISON LAKESHORE NATURE PRESERVE 2016 ANNUAL REPORT



lakeshorepreserve.wisc.edu • lakeshorepreserve@fpm.wisc.edu • 608-265-9275

From the Director...

Gary Brown, PLA, FASLA, Director

As "spring" continues to come and go across the UW-Madison campus, our living and breathing ecosystem in the Lakeshore Nature Preserve is beginning to wake up from its long winter nap, and life is beginning to show its magnificent blossoming cycle again. We had another amazing year in 2016 here in the Preserve with many thanks for all the good work and support the Preserve continues to see, year after year. We are especially thankful for the Friends of the Lakeshore Nature Preserve, who continue to provide substantial support for the Preserve staff and our organization. We also would like to acknowledge the many hundreds of volunteers, students, faculty, staff, and community members who enjoy using this outdoor laboratory here in the heart of the campus.

We are also thankful for the continuous support of the FP&M Physical Plant-Grounds staff for their donation of time and talents in helping maintain the many physical aspects of the Lakeshore Nature Preserve. Their work helps assure we have wood for the fire circles on Picnic Point, keeps our main paths and trails in good working order, empties our trash receptacles, cleans our restrooms, and provides vegetation management support by trimming trees, mowing lawns, and assisting with sign installations. We could not provide the high-quality, outdoor learning environment for teaching, research, and relaxation without this generous support from everyone.

I encourage you all to take some time this spring to enjoy the many wonders of the Lakeshore Nature Preserve. Take a noontime stroll to the tip of Picnic Point. Run the Temin Lakeshore Path. Walk among the Eagle Heights Community Gardens. Get out and enjoy nature in the Preserve and all that it has to offer, throughout the year!

Partners & Stakeholders

Investing in the Preserve—Donors Making a Difference

Laura Wyatt, Program Manager

Private gifts are an important resource that enable the Preserve to manage beyond the basics. Two significant projects were initiated during 2016 as the result of special gifts to the Preserve.

An exceptional gift of \$100,000 from a generous donor has allowed the Preserve to launch a new four-year project to expand efforts to manage invasive biennial species like garlic mustard, Japanese hedge parsley, and thistles in prominent areas of the Preserve.



Enthusiastic Badger Volunteers. Photo by Anne Pearce.

remove targeted invasive plants. The initiative also goes beyond simply removing the invasive species by allowing us to establish a mapping and monitoring program in partnership with Mark Renz, UW Extension Weed Specialist.

Funds from the Patricia E. Dugan Fund, an endowed fund established in 2011 to benefit the Lakeshore Nature Preserve and created through a bequest with the UW Foundation, has made it possible to enhance the

Preserve's Picnic Point entrance. Visitors are greeted by a new kiosk that announces their arrival to the Lakeshore Nature Preserve.

Like the two existing kiosks at

Frautschi Point and the east end of the Howard Temin Lakeshore Path, the new Picnic Point kiosk features a large map of the Preserve, Preserve regulations, a bulletin board for events and timely messages, and a space for a future interpretive panel. The kiosk is complimented by a new entrance landscape design.

While the university provides basic maintenance and management services, funds for facilitating volunteer programming, critical maintenance projects, ongoing land management, and special projects rely on the generosity of many caring individuals. Every gift regardless of size is important and contributes to ensuring the preservation of this amazing place for continued research, outreach, teaching, and recreation for generations to come.

Gifts to the Lakeshore Nature Preserve can easily be given through the UW Foundation at supportuw.org/giveto/lakeshore/ or by mailing a check to UW Foundation, US Bank Lockbox, Box 78236, Milwaukee, WI 53278-0236. Make sure to designate the Lakeshore Nature Preserve on your check.



New kiosk welcomes visitors to the Preserve. Photo by Bryn Scriver.

Friends of the Lakeshore Nature Preserve Support

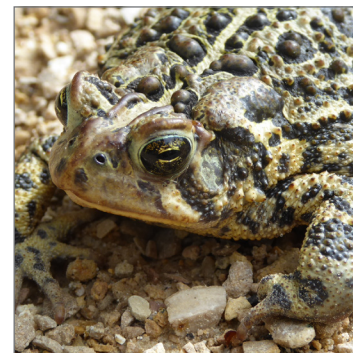
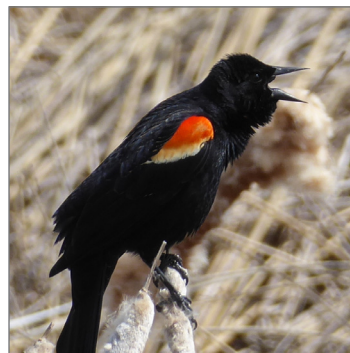
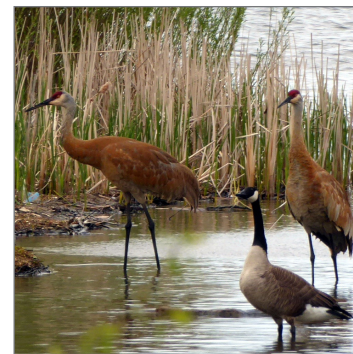
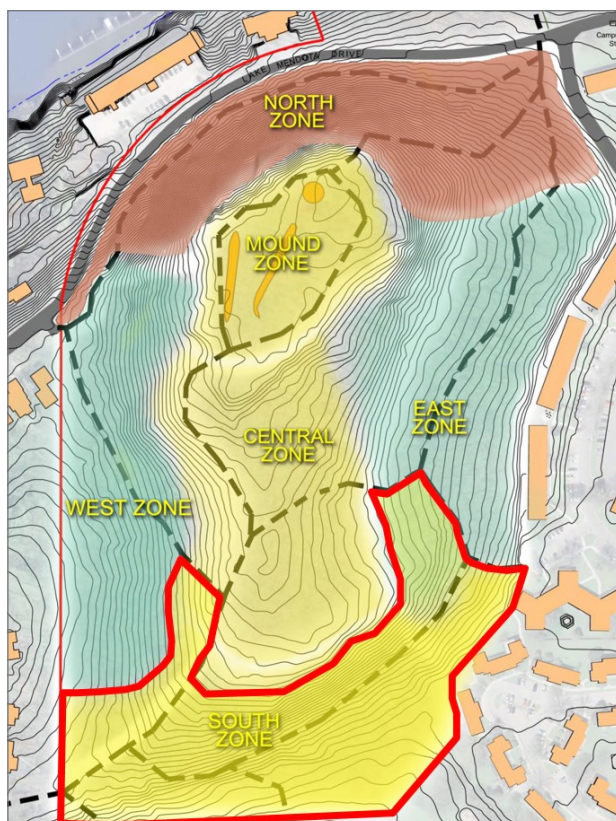
Adam Gundlach, Field Projects Coordinator

Friends of the Lakeshore Nature Preserve continued their support of the Preserve in 2016, offering a series of field trips interpreting the history and ecology of the site, while funding programs (Prairie Partners Internship) and projects (Eagle Heights Woods) that push land management forward.

Friends volunteers contributed significantly to vegetation surveys in the South Zone of Eagle Heights Woods. Surveys conducted during spring and summer aimed to record the plant community prior to invasive brush removal planned for the following winter. When the Prairie Partners intern crew assisted with the summer survey, it highlighted the Friends' contributions. Individual Friends volunteers worked with interns they fund annually to monitor the section of woodland currently under management because of their philanthropic efforts.

In the South Zone, Good Oak Ecological Services completed invasive brush removal across a six-acre section of land. The southern edge was already in great shape from the dedicated efforts of Preserve volunteer (and Friends member) Roma Lenehan. The Good Oak crew also performed control work on black locust in the Mounds Zone, and followed up on previous work in the Mounds and Central Zones by treating resprouting buckthorn.

Cold weather in January built adequate frost in the ground to allow Wolfe Tree Service to work on a number of hazard trees in the Mounds Zone, many of which were likely victims of oak wilt. The most dramatic change occurred on the round mound at the north end of the trail loop where several trees were removed from the mound feature. The round mound will now bath in a pool of sunlight come summer, furthering efforts to bolster herbaceous diversity, while reconnecting the spirits of the sky to the terrestrial, overlooking the water spirits of Lake Mendota below, according to the cultural beliefs of the Ho Chunk.



Student Engagement Grants

The Lakeshore Nature Preserve Committee awarded five competitive Student Engagement Grants totaling \$4,180. These grants provide financial support to undergraduates and faculty/staff working with undergraduates who use the Preserve as a resource for research and education. The funds are made possible through the Academic Endowment Fund of the Preserve at the UW Foundation, established by former faculty members Robert M. Goodman and Henry Hart.

2016 Awardees

Exploring the Wisconsin Prairie Ecosystem: Studying Cold Tolerance of Forbs—\$600

Emily Nettesheim (Undergraduate, Department of Zoology)
Advisor: Ellen Damschen (Assistant Professor Department of Zoology)

Survival and Habitat Use of Eastern Gray Squirrels in an Urban Preserve—\$980

Jonathan N. Pauli (Assistant Professor Department of Forest and Wildlife Ecology)

Estimating survival, dispersal, and habitat use of Common Yellowthroats and Song Sparrows in Biocore Prairie at the UW-Madison—\$600

Matt Hayes (Faculty Associate Department of Zoology and Co-Director of the Biocore Prairie Bird Observatory)
Mara McDonald Emerita Department of Genetics and Co-Director of the Biocore Prairie Bird Observatory)

Exploring Seasonal Yeast Biodiversity in the Lakeshore Nature Preserve—\$1,000

Martin Jarzyna (Undergraduate, UW-Madison)
Advisor: Chris Todd Hittinger (Assistant Professor, Department of Genetics)

Urban Canid Use of the Lakeshore Nature Preserve—\$1,000

David Drake (Extension Wildlife Specialist & Professor Department of Forest and Wildlife Ecology)

Volunteers

Bryn Scriver, Volunteer Coordinator/Outreach Specialist

The Preserve consistently engages campus and community members to help carry out the stewardship of Preserve lands. Volunteers serve by removing invasive species, planting native plants, collecting native plant seed, picking up trash, maintaining trails, and conducting surveys. These activities help to improve ecological function, restore wildlife habitat, and enhance teaching and research opportunities throughout the Preserve.

In 2016... 862 volunteers • 3,539 hours of service • Estimated value: \$ 79,556

New for 2016, with the support of a special gift, we enlisted five individuals to form an ongoing volunteer corps to carry out longer-term volunteer tasks like trail monitoring, tool maintenance, and caring for our entrance landscapes. This gift also allowed us to bring on two Badger Volunteer teams from the Morgridge Center for Public Service to assist our seasonal invasive species specialist with targeted pest plants. Engaging volunteers not only benefits the Preserve, but can also foster a feeling of connectedness to nature while increasing the ecological literacy of the people involved. We work hard to make sure that volunteers are engaged in caring for the Preserve in ways that are meaningful to them while accomplishing needed work. If you would like to get involved, contact Bryn Scriver, Preserve Volunteer Coordinator at bryn.scriver@wisc.edu.

Fire Circles at Picnic Point

An outing to Picnic Point has long been a tradition for many Madisonians. In fact, archeological excavations show that the area has been an attractive destination for at least 12,000 years! The sweeping views and its proximity to the heart of campus make it an ideal refuge from busy university and city life.



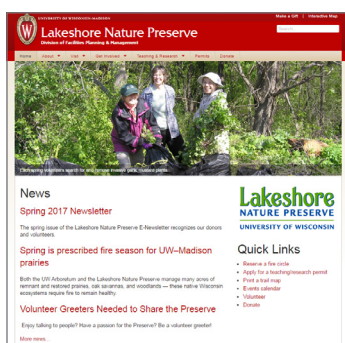
The Hooper Outing Club enjoys a fire on Picnic Point. Photo by Jeff Miller/UW-Madison

There are six reservable fire circles on Picnic Point for visitors to enjoy a warm fire or cook a picnic meal. The fire circles are maintained by Preserve staff; FP&M Physical Plant staff provides firewood free of charge. Reservation records for 2016 show that an estimated 1,190 groups representing 21,175 people took advantage of this amenity.

Website Revised

We are excited to announce that the Lakeshore Nature Preserve website (lakeshorepreserve.wisc.edu) has been upgraded and enhanced with a completely new look and feel in keeping with UW-Madison design standards. The website has:

- Improved navigation.
- New and updated content.
- Mobile-friendly responsive design.



Please take some time to explore the new site!



Preserve Teaching/Research Permits

The Lakeshore Nature Preserve offers a rich environment for teaching and research activities—right on campus! Previous projects include ecological surveys, art installations, archaeological experiments, mapping, climate and biology labs, wildlife study, genetic material collections, and service learning. During the 2016-17 program year, 68 active permits represented engagement by 20 different departments and programs. Join the growing list of faculty, staff, and students using the Preserve.

Preserve Administration

Lakeshore Nature Preserve Committee

Established by the UW provost in 2000, the Lakeshore Nature Preserve Committee is charged “to ensure the integrity of these cherished campus resources through the provision of necessary and appropriate oversight, policies, guidelines, stewardship and management.” Operating under principals of shared governance, the committee is comprised of three faculty, three academic staff, three students, and other interested stakeholders. We thank the current members for their time and service.

2016-17 Preserve Committee

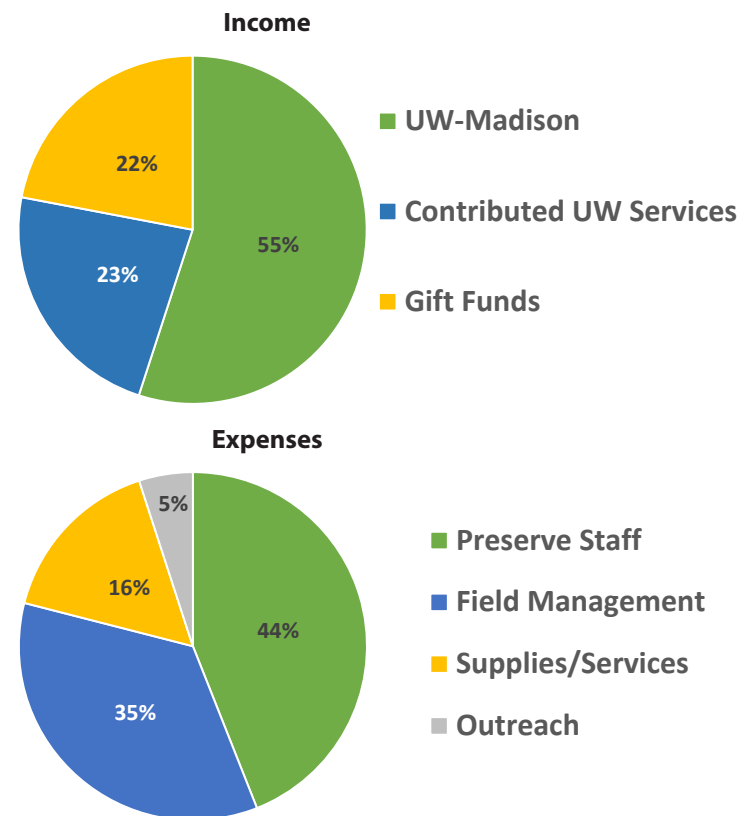
Voting members

- David Drake—Faculty, Forest & Wildlife Ecology
- Sara Hotchkiss—Faculty, Botany (Committee Chair)
- Glen Stanosz—Faculty, Forest & Wildlife Ecology
- Janet Batzli—Academic Staff, Biology Core Curriculum
- Alan Turnquist—Academic Staff, Undergraduate Programs & Services
- Matilde Urrutia—Academic Staff, Soil Science
- Kendl Kobbervig—Student
- August McGinnity-Wake—Student
- Brooke Nelson—Student

Non-voting ex-officio or consultants

- Gary Brown—Director, Lakeshore Nature Preserve
- Gisela Kutzbach—Board President, Friends of the Lakeshore Nature Preserve
- Rhonda James—Senior Landscape Architect, Campus Planning & Landscape Architecture
- Donna Paulnock—Interim Director, UW Arboretum
- Kelly Ignatoski—Director, University Apartments

2016 Financials



In 2016 the Preserve received gifts totalling \$74,366 from 64 donors.

Special Memorial Gifts Received in Memory of...

Erin Douglas

Carol A. Peterson

George Fitzgerald

Alice Staeck Pugacz

John Grace

Harriet Riley

To learn how you can make a lasting difference to the Lakeshore Nature Preserve, contact Laura Wyatt, Program Manager (laura.wyatt@wisc.edu; 608-265-9275).

Support the Preserve

To support the Preserve's ongoing mission of land stewardship, make a donation today!

Visit supportuw.org/giveto/lakeshore/.

2016 Donors

Anonymous
David Baumgartner
Dr. William Barker & Professor Susan Paskewitz
Professor Patricia Becker
Timothy & Lisa Blythe
Dr. Robert & Leslie Buerki
John & Selma Burley
Megan Chanin
Professor William J. Cronon
Dr. Norbert & Mary DeByle
Dr. William & Alexandra Dove
Richard Dubielzig
Richard & Kathi Dwell
Dr. Michael & Mary Pat Feifarek
Friends of the Lakeshore Nature Preserve
Claudia Gelzer
Dr. Kennedy Gilchrist & Heidi Wilde

Susan Heidrich
Steve & Pam Grace
Robert Gurda
Professor Evelyn Howell
Professor Thomas Hudak
Dr. Craig & Marilyn January
James Krikelas
Matthew & Kimberly Lea
Roma Lenehan
Kathleen Lieber
Helen Lodge
Blair Mathews & Karen Johnson Mathews
Mary McCarthy
Bonnie McMullin-Lawton & John Lawton
Reverend Thomas & Emily Nissley
Roger Peterson
Andrea Poehling

Sheryl Popuch & Dr. Frederick Kelcz
Professor Kenneth & Nancy Ragland
Anastasia & Jeffrey Reisinger
Robin E. Rider
Ronald Towle & Elinor Riley
Olivia Sanderfoot
Rob Shively
Thomas G. Sonnleitner Jr.
Anton TenWolde & Marcia Smith
Maxine Triff
Peggy Wiederholt
West Side Garden Club
Dr. Jack Westmen
Peggy Wiederholt
Sarah & John Williams
Levi & Janet Wood
Sandra & Andrew Wu
Laura & Dan Wyatt

Lakeshore Nature Preserve Staff

- Gary Brown, Director, gary.brown@wisc.edu
- Laura Wyatt, Program Manager, laura.wyatt@wisc.edu
- Bryn Scriver, Volunteer Coordinator/Outreach Specialist, bryn.scriver@wisc.edu
- Adam Gundlach, Field Projects Coordinator adam.gundlach@wisc.edu
- Allison Ban-Herr, Field Technician, allison.banherr@wisc.edu



**Facilities Planning
& Management**

UNIVERSITY OF WISCONSIN-MADISON